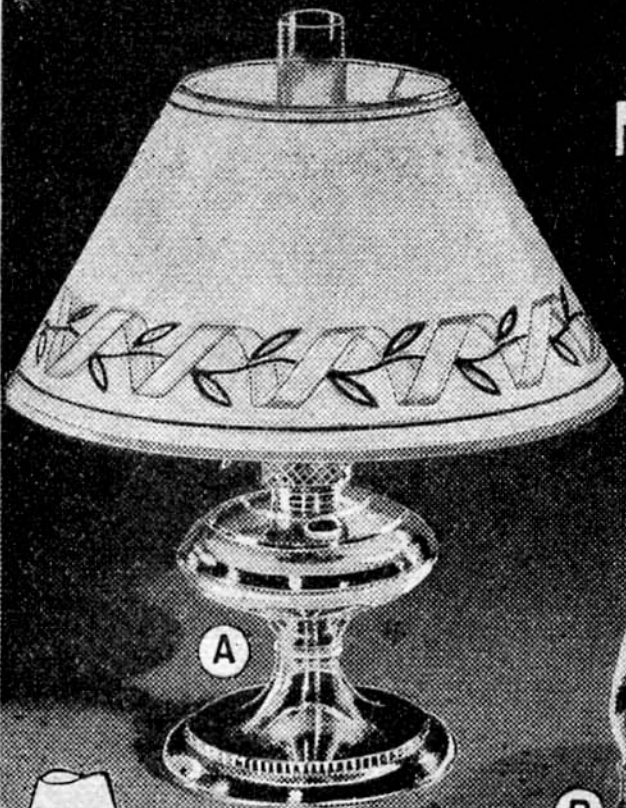


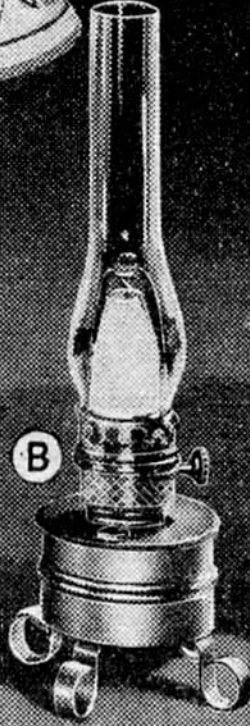
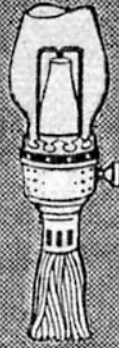
Save \$1⁵⁰ to \$2⁵⁰
 Most Powerful Kerosene
 Mantle Lamp Built



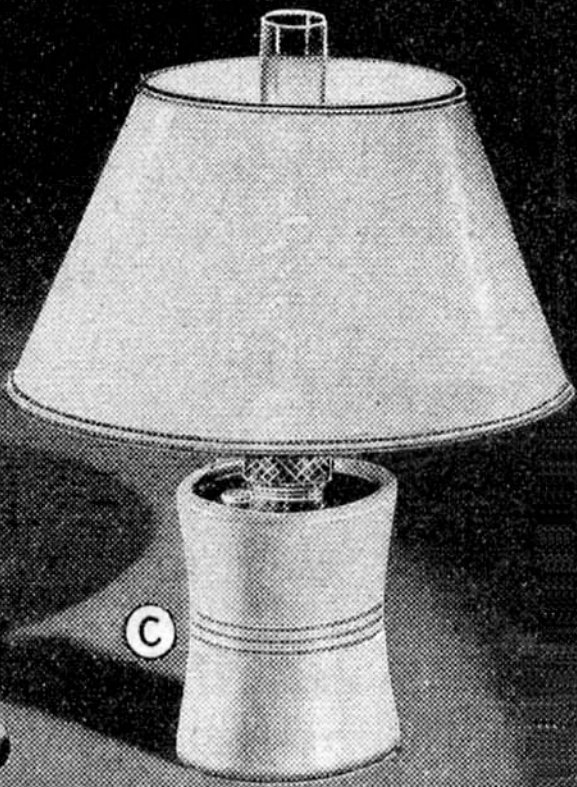
(A)

75 CANDLE
 POWER

New Exclusive Ward
 Improvement Gives
 Electric Lamp Brilliance
 with Combination
 Center Draft Wick and
 Incandescent Mantle



(B)



(C)

\$4⁹⁵ \$6.95
 Value

\$3⁴⁹ \$5.45
 Value

\$5⁹⁵ \$7.95
 Value

From Ward's own laboratory comes the perfect kerosene (coal oil) Mantle Lamp. Easy to use—super brilliant—clean—odorless. Lights instantly—no pressure pumping—no generator to clean. Cheap to operate, costs less than 1c per night.

Gives brilliant white light like electric bulb. Makes fine print easier to read. Takes eye strain out of sewing. All lamps hold kerosene (coal oil) for 12 hours' burning. Choose from 3 styles below. *Available.*

Chromium Plated Base

- (A) Was \$5.95. Chromium plated base. 18-in. Ivory colored parchment paper shade. Silver traced ribbon and green leaf design border. 22½ in. high. Shade, chimney, mantle, wick, burner. **486 A 7334**—Shipping wt. 12 lbs. **\$4.95**
Extra Shade for above lamp. Ship. wt. 4 lbs.
486 A 7532..... 69c

Bronze Color Base

- (B) Dull bronze finished base. Chromium plated burner, filler cap. Leg spread 7¾ in. 19½ in. high. Font holds enough kerosene (coal oil) for 12 hour's burning. Heat-proof chimney, mantle, wick, burner. Shipping weight 8 lbs.
486 A 7356.... \$3.49

White Base

- (C) Price reduced \$1.00. White pottery base. 17-inch diam. Ivory colored parchment paper shade—silk-like trim. 23 in. high. Metal font removable for filling. With shade, chimney, mantle, wick, burner. Ship. wt. 18 lbs.
486 A 7342.... \$5.95

Replacement Parts for 486 A 7334, 486 A 7356 and 486 A 7342 Lamps

- 86 A 7326—Mantle. Ship. wt. 6 oz. 25c
- 586 A 7327—Chimney. Wt. 1 lb. 12 oz. 29c
- 86 A 7328—Wick. Ship. wt. 2 oz. 14c

USE YOUR CREDIT
 See Page 6